

Barack & Michelle Obama
Academy

GO Team Meeting

May 21, 2025

Agenda

- I. Call to Order**
- II. Roll Call; Establish Quorum**
- III. Action Items**
 - a. Approval of Agenda
 - b. Approval of Previous Minutes:
 - c. Additional Action Item
- IV. Discussion Items**
 - a. 2025 Spring MAPS results
 - b. Needs Assessment
- V. Information Items**
 - a. Principal's Report
 - b. Cluster Advisory Team Report – 3/24/2025
 - c. Facilities Master Plan Taskforce Update
 - d. GO Team Elections
- VI. Announcements**
- VII. Adjournment**

2025 Spring MAPS Results

Data Points to Consider

- Spring Results
- Fall to Spring Comparison
 - Literacy
 - Numeracy



MAP Data - Literacy

BAMO	Fall 2024-2025	175	39%	33%	27%	
	Winter 2024-2025	185	39%	36%	21%	4%
	Spring 2024-2025	190	44%	25%	26%	5%

MAP Data - Mathematics

BAMO	Fall 2024-2025	175	40%	47%	13%
	Winter 2024-2025	184	40%	47%	13%
	Spring 2024-2025	190	45%	39%	15%

MAP Growth Data - Literacy

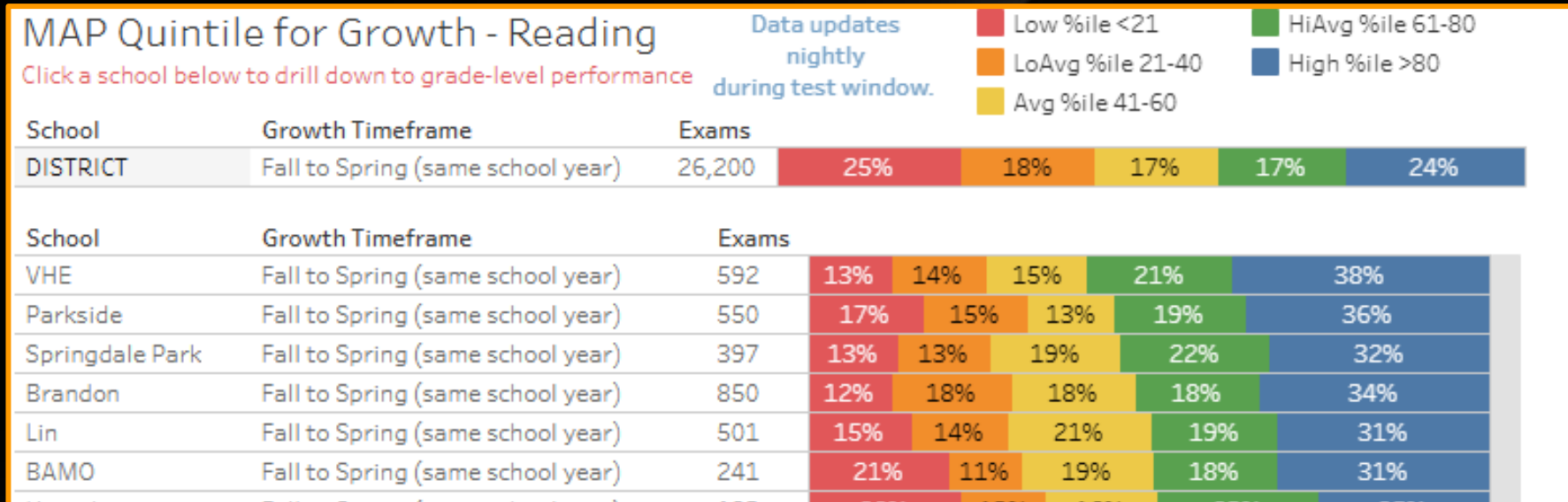
School	Growth Timeframe	Exams		
DISTRICT	Fall to Spring (same school year)	26,200	49%	46%

School	$\frac{1}{2}+$ ▾ Growth Timeframe	Exams		
VHE	Fall to Spring (same school year)	592	31%	65%
Springdale Park	Fall to Spring (same school year)	397	32%	63%
Brandon	Fall to Spring (same school year)	850	36%	59%
Parkside	Fall to Spring (same school year)	550	36%	59%
BAMO	Fall to Spring (same school year)	241	37%	56%

MAP Growth Data - Mathematics

School	Growth Timeframe	Exams			
DISTRICT	Fall to Spring (same school year)	25,920	46%	5%	49%
School	Growth Timeframe	Exams			
Springdale Park	Fall to Spring (same school year)	397	24%		72%
VHE	Fall to Spring (same school year)	591	24%		71%
Brandon	Fall to Spring (same school year)	847	25%		69%
Cascade	Fall to Spring (same school year)	229	28%		67%
Jackson Elementary	Fall to Spring (same school year)	424	33%	8%	58%
Lin	Fall to Spring (same school year)	502	34%	6%	60%
BAMO	Fall to Spring (same school year)	241	34%		62%
Morningside	Fall to Spring (same school year)	700	35%		61%

MAP Growth Data - Literacy



MAP Growth - Mathematics

MAP Quintile for Growth - Math

Click a school below to drill down to grade-level performance

Data updates
nightly
during test window.

Low %ile <21

LoAvg %ile 21-40

Avg %ile 41-60

HiAvg %ile 61-80

High %ile >80

School	Growth Timeframe	Exams					
DISTRICT	Fall to Spring (same school year)	25,920	22%	19%	17%	17%	25%

School	Growth Timeframe	Exams					
Springdale Park	Fall to Spring (same school year)	397	8%	13%	13%	25%	42%
VHE	Fall to Spring (same school year)	591	12%	10%	14%	19%	46%
Brandon	Fall to Spring (same school year)	847	10%	11%	17%	21%	42%
Cascade	Fall to Spring (same school year)	229	13%	10%	18%	20%	39%
Hutchinson	Fall to Spring (same school year)	218	19%	13%	12%	18%	38%
BAMO	Fall to Spring (same school year)	241	18%	12%	15%	20%	36%
Morningside	Fall to Spring (same school year)	700	12%	16%	17%	21%	34%
Lin	Fall to Spring (same school year)	502	13%	15%	17%	24%	31%

MAP Growth Targets

K-5

READING- #5 IN THE ENTIRE APS DISTRICT IN MEETING
GROWTH TARGETS: 63%- 56% EXCEEDING

MATH- #7 IN THE ENTIRE APS DISTRICT IN MEETING GROWTH
TARGETS: 63%- 62% EXCEEDING

INDIVIDUAL HIGHLIGHTS WITH DEE

1ST GRADE #1 IN THE DISTRICT IN READING IN THE ENTIRE DISTRICT - 63%- 56%
EXCEEDING

3RD GRADE #1 IN THE DISTRICT IN READING IN THE ENTIRE DISTRICT -72%- 60%
EXCEEDING

4TH GRADE #7 IN THE DISTRICT IN MATH – 71% EXCEEDING

5TH GRADE #10 IN THE DISTRICT IN MATH - 52%- 48% EXCEEDING

5TH GRADE #6 IN THE DISTRICT IN READING - 60% - 55% EXCEEDING

INDIVIDUAL HIGHLIGHTS

General Education Classrooms

3RD GRADE- #1 IN THE DISTRICT IN READING - 75%- 62% EXCEEDING

3RD GRADE- #8 IN DISTRICT IN MATH - 65%-57% EXCEEDING

4TH GRADE- #2 IN DISTRICT IN READING - 70% - 63% EXCEEDING

4TH GRADE- #1 IN THE ENTIRE DISTRICT IN MATH - 86% EXCEEDING

5TH GRADE MATH - 7TH IN THE DISTRICT - 59% -55% EXCEEDING

5TH GRADE READING - 9TH IN THE DISTRICT - 59%-55% EXCEEDING

2024-2025
Designing Academic

Masterpieces

Needs Assessment

ACTIVITY

Needs Assessment

During this Needs Assessment, we will look at data from the Spring MAPS administration and identify 2-3 potential needs for the 2025-2026 school year.

This discussion will help school leadership as they prepare for the 2025-2026 school year.



Needs Assessment: Guiding Questions

- What does this data tell us?
- What good news is there to celebrate?
- Where are growth opportunities?
- What trends do we see in the data?

ACTIVITY: Strengths & Opportunities

Based on your discussion about the school data, determine point of strength and opportunities for improvement and summarize them below.

Strengths	Opportunities

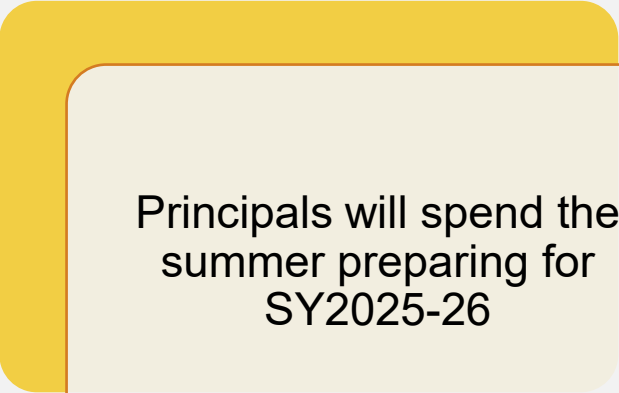
Needs Assessment:

Based on your responses for strengths and opportunities, what must be true for (**Barack & Michelle Obama Academy**) to Achieve Excellence:

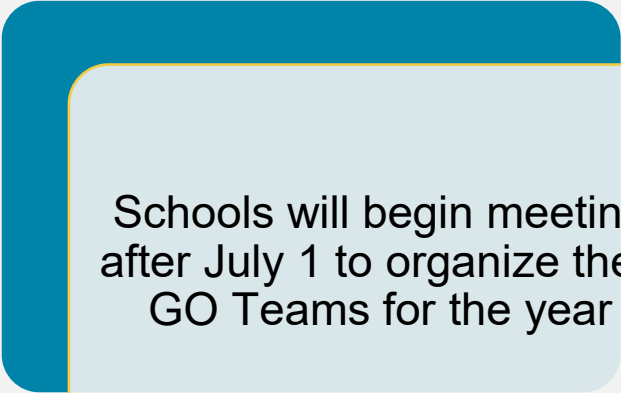
	Need
1	
2	
3	



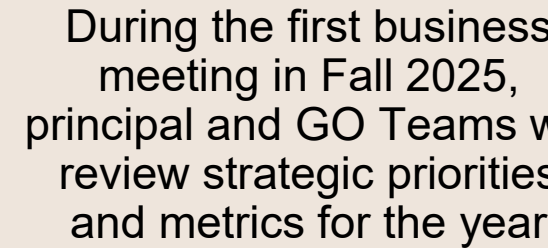
Next Steps



Principals will spend the summer preparing for SY2025-26



Schools will begin meeting after July 1 to organize their GO Teams for the year



During the first business meeting in Fall 2025, principal and GO Teams will review strategic priorities and metrics for the year

Information Items



Principal's Report

- Beating the Odds
- CCRPI
- End of Year Calendar

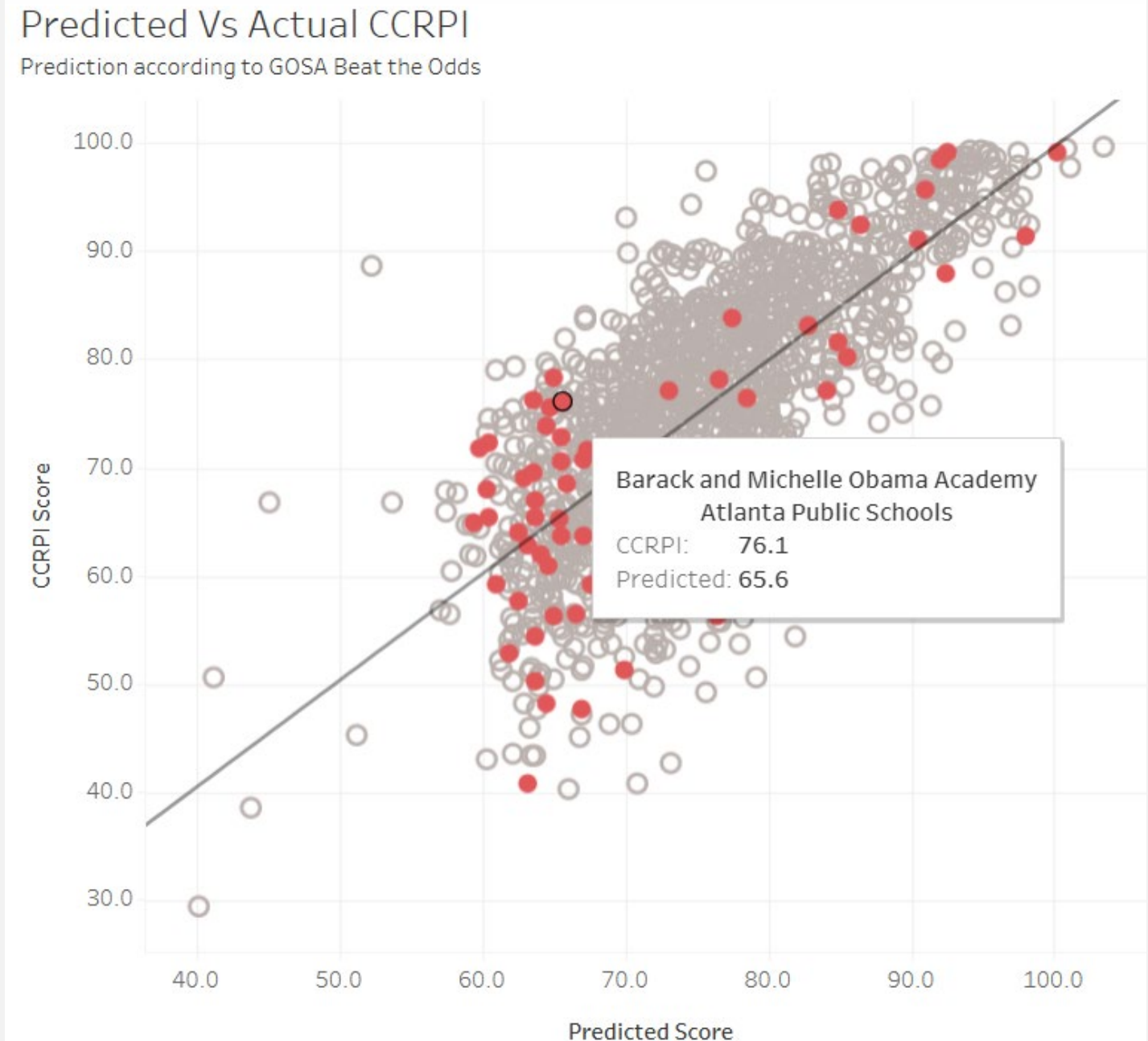


List of schools that beat the odds

BAMO's expected
CCRPI was 65.6
but finished with
76.1!

School Name	Readiness	Closing Gaps	Progress	Content Mastery	BTO
Centennial Plac..	72.10	100.00	99.60	48.10	13.50
L. O. Kimberly E..	68.60	100.00	100.00	42.10	12.74
T. J. Perkerson ..	67.70	92.90	89.60	43.20	12.14
F. L. Stanton El..	66.60	100.00	92.30	39.50	11.97
Paul L. Dunbar ..	66.90	100.00	100.00	40.70	10.96
Barack and Mic..	73.70	100.00	93.80	45.20	10.54
Tuskegee Airm..	68.60	100.00	91.50	43.60	9.33
Charles R. Dre..	91.40	95.80	92.40	95.90	8.94
Cascade Eleme..	64.70	100.00	83.50	36.80	7.85
Deerwood Aca..	71.30	100.00	85.60	45.00	7.33
Springdale Par..	95.50	100.00	100.00	100.00	6.56
Virginia-Highla..	93.60		100.00	100.00	6.47
Parkside Eleme..	84.50	65.00	99.80	74.10	6.41
Bazoline E. Ush..	68.10	100.00	77.60	44.20	6.30
Harper-Archer ..	65.80	100.00	90.90	31.60	6.00
Bolton Academ..	89.60	100.00	100.00	81.70	5.98
Michael R. Holli..	58.40	100.00	81.30	25.40	5.61
William M.Boy..	60.80	100.00	91.50	38.30	5.21
Finch Elementa..	71.40	85.70	72.00	43.20	5.08
Morris Brando..	93.60	83.30	100.00	98.40	4.78

This graph works similarly to the challenge index we use for milestones. BAMO outperformed the expectation!



Principal's Report

Mark Your Calendars

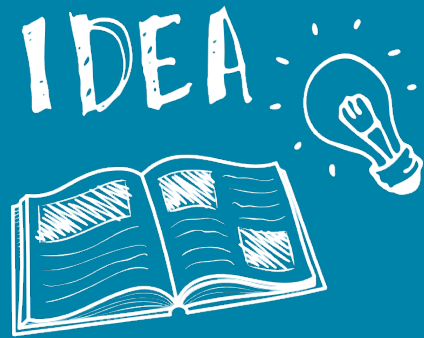
- Support our Fun Run
- Awards Days @ BaMO
 - Pre K - Fri., May 16
 - Kindergarten - Weds., May 21
 - 5th Grade - Tues., May 27
 - 1st – 4th Grade - Weds., May 28
- Field Day - Thurs., May 29
- Last Day of School - May 29
- Summer School - June 2



Additional Information Items

- **March 24, 2025 Cluster Advisory Team Report**
- **Facilities Master Plan Taskforce Update**
- **GO Team Elections**
 - Find **RESULTS** at apsstrongschools.com

Announcements



- **GO Team Members**
 - **Complete your end of year surveys (AVAILABLE NOW!** Check your email for the link)
 - Principal Feedback Survey
 - GO Team Satisfaction Survey
 - **Complete your required trainings ASAP**
 - Contact the GO Team Office with any questions



Thank
You

for yet another
great year!

